

HOUSES Kitchens + Bathrooms

ISSUE 07 — \$9.95

DESIGN VISION

17 homes to love and inspire you
148 pages of great ideas



CREDITS

Editor
Kathryn Butler
Editorial enquiries
Kathryn Butler
T: +61 3 8699 1000
houses@archmedia.com.au

Editorial director

Caroline Bevan

Editorial team

Suzannah Buckley

Cassie Hansen

Mary Mann

Jeff Pope

Rosanna Robertson

Sydney editor

Ferrie Grasswell

Brisbane editor

Margo Fraser

Production

Suzanne Wall

Design services

Sara Black

AGM Publishing

Managing director

Lari Close

Publisher

Sue Harris

Associate publishers

Audience acquisition

and events

Jacinta Reedy

Magazines

Jan Henderson

Advertising enquiries

Sic 533 Tin

Eva Dixon

Gillian Lazaro

+61 3 8699 1000

NSW, Qld, NT

Victoria Hawthorne

+61 2 9580 7000

WA

O'Keefe Media

Lucia Sakamore

+61 8 9381 7766

Print management

DW Rubicon

Distribution

Australia

Gordon & Gotch

Australia, bookshops and

international

and International Right Point Distribution

Subscriptions

Purchase print and digital copies of *Kitchens + Bathrooms* and *Houses* magazine for more inspirational ideas. Visit archmedia.com.au/subscribe or contact the publisher below



Published by

Architecture Media Pty Ltd
ACN 000 626 686
Level 6, 163 Eastern Road
South Melbourne 3205
Victoria, Australia
T: +61 3 8699 1000
F: +41 3 9696 2627

publisher@archmedia.com.au
archmedia.com.au

New South Wales office

Level 2, 5 Manning Street
Potts Point, NSW 2011
T: +61 2 9580 7000
F: +41 2 9580 7600

Endorsed by

The Australian Institute of
Architects and the Design
Institute of Australia



ISSN 1835-5241

Copyright © 2015 is assigned
trademark of Architecture Media Pty Ltd.
All designs and plans in this publication are
copyright and are the property of
the architect and designer concerned.

WELCOME



Nowadays, the design and ambience of a home's kitchen and bathroom is equally as important as the main living areas. Enjoying and savouring life's daily rituals is increasingly emphasised. This issue of *Kitchens + Bathrooms* features seventeen Australian homes that show how this trend is unfolding.

People's enthusiasm for cooking and entertaining has continued into this year, and the kitchen still takes centre stage in the home. Designers are taking cues from the open kitchens of restaurants and incorporating their industrial aesthetic. There is also an increasing honesty and openness to the materials used in today's home kitchen - concrete and solid stone benchtops, timber joinery and stainless steel details all add slick style. Open-plan living spaces with integrated kitchens continue to trend, with kitchen benches acting more like traditional dining tables than storage units.

The direction in bathrooms sees three being designed as another "living room" - a place to look in at the start of the day, or delight in when winding down. More and more, the bathroom features designer objects, such as pendant lights, stools and custom-designed joinery. A connection to the outdoors, normally seen in living spaces, has also been introduced into the bathroom - with adjacent courtyard spaces providing fresh air, light and a relaxing enclosure.

Filled with emerging trends and new ideas for the kitchen and bathroom, this issue is sure to offer something that will inspire your own design.

Write to us at houses@archmedia.com.au

Copy: Kitchens by Theven Paturel and Steve Design; Photographs by Emma Hooper

NICE & NATURAL

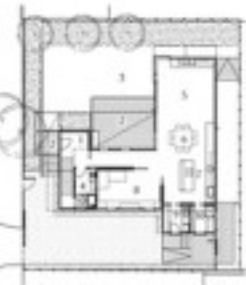
• PLEYSIER PERKINS & MIM DESIGN •

In the Victorian coastal township of Barwon Heads, a palette of natural materials has helped to create a modern Australian beach house.

Words by Cassie Hansen
Photography by Diana Snape



Upper floor 1:400



Ground floor 1:400

- 1 Entry
- 2 Deck
- 3 Garden
- 4 Powder room
- 5 Living
- 6 Dining
- 7 Kitchen
- 8 Playroom
- 9 Laundry
- 10 Pantry
- 11 Bedroom
- 12 Ensuite
- 13 Bathroom

Scale 1:400



01 A neutral material palette allows artwork and decorative items to pop in the space. Artwork: Michael Muir, *Connecting the Dots*, (2011).



02 The glass buffet edges into the dining space, exhibiting the client's porcelain collection. Artwork in background:

Matthew Johnson, *Apas Vista*, (2011). Artwork in foreground: Michael Muir, *Connecting the Dots*, (2011).

03 This interpretation of a Shaker-style kitchen abandons overhead cabinetry in favour of open space.

04 The custom-designed vanity unit is complemented by a wall-mounted mirrored cabinet.



The beach house is not just a coastal retreat. For many, it serves as a second home, a place for the family to join together "whether you love them or not," says Ramon Pleyzier, director of Pleyzier Perkins. While it gets a laugh, Ramon makes a fine point. The holiday home should encourage activities that are often unintentionally lost when back in the big smoke – hang-out sessions with parents and kids and quality conversations over five-hundred-piece Jigsaw puzzles.

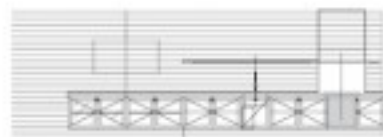
In this beach house in Barwon Heads, Victoria, interior design studio Mize Design and architecture firm Pleyzier Perkins have created downstairs living quarters that encourage this interaction of kin. From the friendly, natural palette of the interiors to the open and casual zones, the downstairs space nurtures relaxed heart-to-hearts, whether it be in the living, dining, kitchen or outdoor zones.

The brief for the kitchen was at first somewhat disconcerting for the architects. "Shaker-style" was even thrown around by the four-time clients (a colonial country look that features an unsightly amount of cupboards and cabinetry with only a dubious relationship to the furniture of the Shaker movement). "If a new client said that to us, we'd almost tell them they've got the wrong people! But they really challenged us," Ramon says. The result is a modern

interpretation of the style. In lieu of crowded rows of cabinets, the architects opted for streamlined custom-made joinery with open shelves to display crockery and ceramic pieces. A hidden walk-in pantry frees up clutter in the workspace and houses the refrigerator and other appliances. The stone benchtop and oak flooring are robust additions, but don't clash with the overall scheme. But it's the glass display buffet neighbouring the dining table that steals the show. With its cantilevered end – cleverly hiding a heating duct – it presents itself more as a piece of furniture, or even an exhibition space for the owner's collection of coastal blue porcelain crockery. The kitchen is soft and gentle, employing textured, chalky hues to evoke a comfortable, lived-in feel.

Upstairs, the bathroom and ensuite support the natural palette of the rest of the house. The custom vanity unit looks deceptively freestanding, while the blackened steel frame around the mirror harks back to the fireplaces in the living room and main bedroom. A skylight above the ensuite shower helps with ventilation and allows light into the room, aided by the refraction of the white, glossy subway tiles.

It's a special place, this home away from home – one to talk about with the whole family over cool summer drinks. >>>



Kitchen elevation 1:100



0 2m



Ensuite and bathroom plan 1:100



Ensuite elevation 1:300



Bathroom elevation 1:100

05
68 Glossy, white subway tiles help bounce around light from the skylight, as seen here in the ensuite.

Architect

Pleyzier Perkins
Level 1, 2/40 Green Street
Prahran Vic 3181
+61 3 9553 6766
info@pleyzierperkins.com
pleyzierperkins.com

Practice profile

An architecture studio specializing in modern residential design.

Project team

Ramon Pleyzier, Berit Burton,
Karuko Nakanishi, Alicia
Mattingley

Interior designer

Mim Design
1/4 Bond Street
South Yarra Vic 3141
+61 3 9826 1266
info@mimdesign.com.au
mimdesign.com.au

Practice profile

Mim Design is a diverse creative practice specializing in the design of interior environments.

Project team

Miriam Farming, Kimberley
Wiedemann

Builder

Wade Builders

Consultants

Soft landscaping: Krisp
Landscape Design

Kitchen products

Internal walls: Regency
Profile timber lining boards,
painted white

Flooring: Pacific Floors Du
Chateau engineered oak
floorboards with white oil
finish

Joinery: Stone Italiana Virgo
Grain reconstituted stone
benchtops and island bench;
splashback made of Regency
Profile timber lining boards,
painted white; dressed and
painted timber cupboard
doors

Lighting: Lights and
Tracks recessed adjustable
downlights; Corporate
Culture Caravaggio pendant
(above island bench)

Sinks and tapware: Franke
Australia Kubus undermount
double sink; Rogerseller Tonic
sink mixer; Qasar Executive
under-cupboard rangehood
Appliances: Miele oven,
cooktop and fully integrated
dishwasher

Doors and windows:

Hardwood timber windows
painted Dulux 'Drive Time'

Furniture and accessories:

Custom-designed dining
table by Mim Design;
Corporate Culture Steelwood
stools; Billiani Doll chairs,
Vincent Van Duysen pottery
bowls, Low Tree Trunk trays
and Skitch timber chopping
boards from Hub Furniture;
Mud ceramics

Bathroom products

Internal walls: Perini white
subway tiles, staggered layout

Flooring: Natural Stone
Tiles Arno Taupe from Aeria
Country Tiles

Joinery: Custom-made white
2-pac vanity unit with lined
solid oak legs and mirrored
shaving unit with black steel
mirror trim; Stone Italiana
Virgo Grain reconstituted
stone benchtop

Lighting: Lights and Tracks
recessed downlights;

Produzione Privata
Acquatinta pendant

Tapware and fittings:

Rogerseller Coco chrome
taps and Cosmic Architect
chrome fittings and
accessories; Hansgrohe
Raindance Ulnica 5 shower
rail and Puro shower mixer
from Rogerseller

Sanitaryware: Rogerseller
Matrix toilet, Catalano
Roma washbasin, Pura 1800
pressed steel bath and Grata
linear shower grate; Kaldewei
Avantgarde Superplan
shower base

Doors and windows:

Hardwood timber windows,
painted, Velux VSE skylights

Other: Custom-made
recessed tiled bottle shelves

